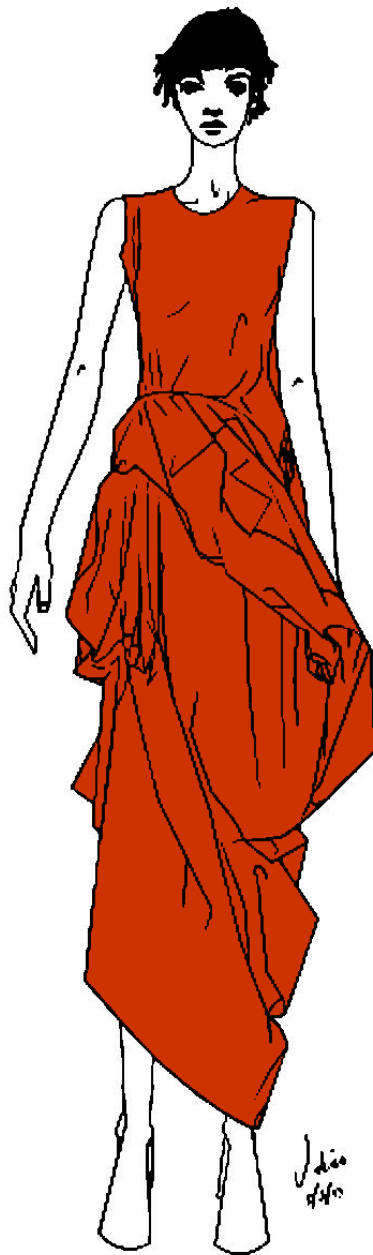


CENTER FOR PATTERN DESIGN

Subtraction Cutting

Julian
Roberts



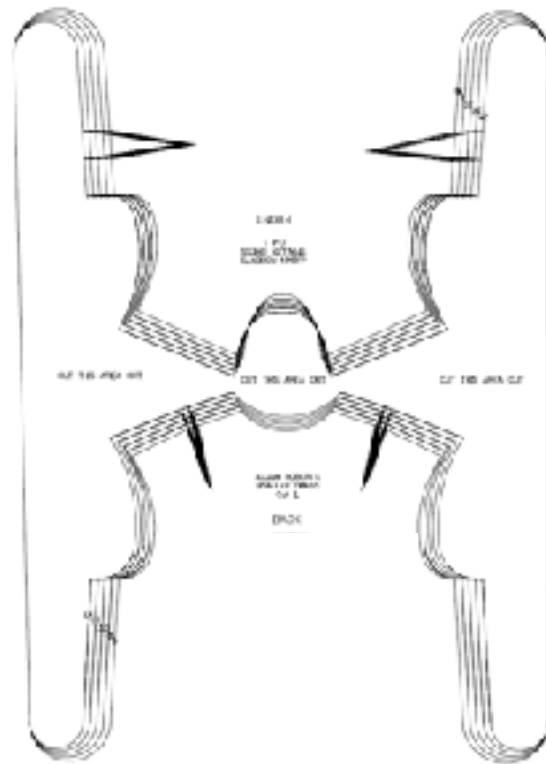
This pattern is the first of Julian Roberts' Subtraction Cutting dresses. It is from the famous Red Dress series that swept London when it was first invented. It can be made in one color or in a combination of fabrics. Mr. Roberts has also created this dress for London Fashion Week featuring graphic prints engineered to the cut of the dress, highlighting the unusual construction.

The 'Smaller' Dress #41

REQUIRED FABRIC: 4 yards either 45" or 60". *Suggested fabrics: Crisp silks or cottons for greater volume or silk, rayon or poly crepes, crepe-backed satin, silk velvet, georgette or chiffon for a softer silhouette.*

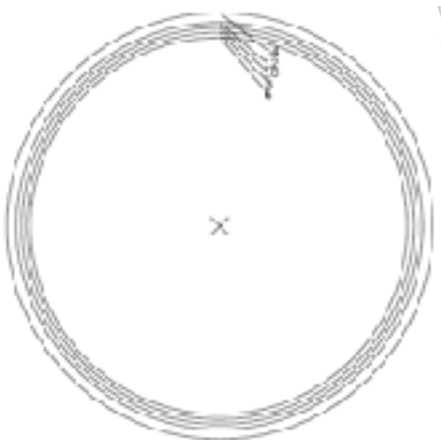
Subtraction Cutting

Version 2: Subtracted Bodice Pattern



Subtracted Pattern Nest

Use this bodice nest to lay out as a Subtraction Pattern, cutting away the negative image, leaving the F & B free to sew together at the shoulders and sides until the fabric ends. See Version 2 layout.



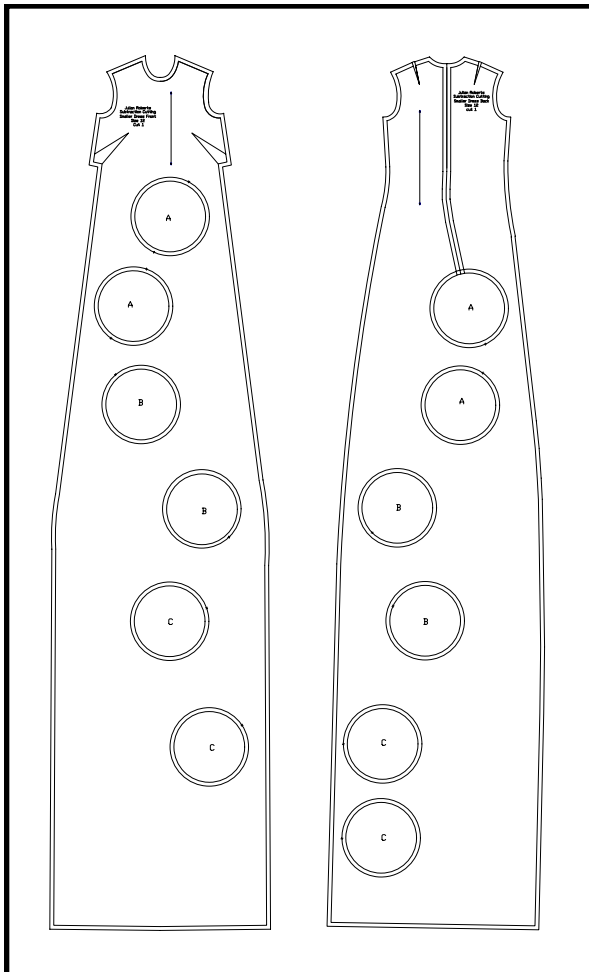
Placement is approximate and need not be exact.

© 2009 S. Ericson

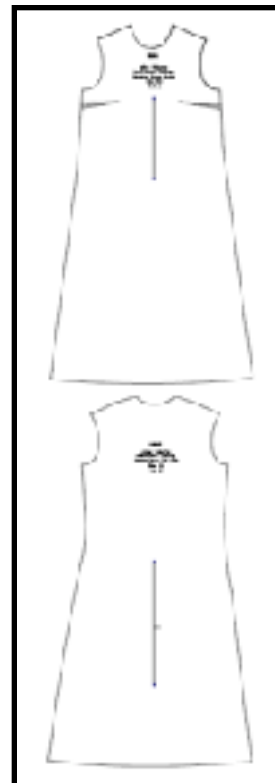
Version 1: Layout & Cutting With Front & Back Bodice Patterns

You will need to draw the full length of the dress with chalk on your fabric. It is too long to print out. Seams are included in the patterns.

1. Cut out your size from the nest of bodices and place on fabric. Trace your bodice and extend its sides in A-line shape until dress measures floor length.
2. At that point extend the sides straight down, not in A-line, until whole dress measures 11.5 feet from shoulder. Width at bottom of dress is approximately 30" for front and for back; it can vary but should be the same front and back and also for the width of the lining hem.
3. Cut out 12 of the circles in your size and label them in pairs, two A's, two B's, two C's, two D's, two E's and two F's. Place in pairs according to layout diagrams for front and back.
4. Darts can be either French darts (diagram) or basic darts (nest) for this design.
5. Dress may have zipper (as in diagram) or be pull-on, depending on size and fabric. Pull-on version should have neck placket.



**Fabric is single thickness
for both dress and lining.**



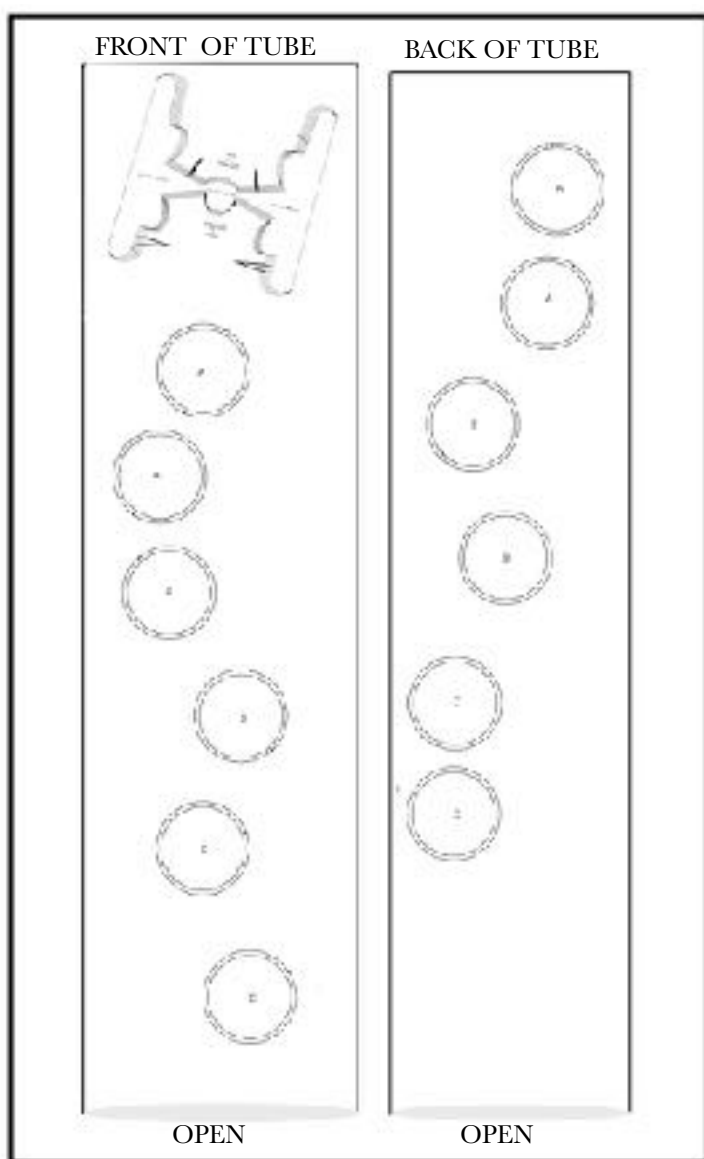
Lining Diagram

Lining Diagram

Lining fabric may be another color or print. Trace lining pattern from your dress pattern. Lining and dress will be joined together at the hems so they must measure the same **width** at the hems when finished but the lining is shorter in length; make it mid-calf length. Since the hems are joined, the effect will be like a harem hem; therefore, if the lining is shorter, the dress will be shorter.

Version 2: Layout & Cutting Using Subtracted Bodice Pattern

As in Version 1, you will need to draw the full length of the dress with chalk on your fabric. It is too long to print out. Seams are included in the patterns.



First, fold your fabric lengthwise and stitch it into a tube. You may also have one color or print on the back and another on the front. The diagram shows the fabric, right side out, stitched into a long tube, like a pillow case, open at the bottom. Front view on left, back view on right.

1. Trace off your size of the subtraction pattern.
2. Place the subtraction pattern on the tube as shown. Place the 12 circles as shown, see Version 1 instructions. Trace them and label them by their letter. You will have two of each letter from A to F.
3. Cut away designated portions of the bodice.
4. Cut away the circles.

Assembly

1. Stitch darts if you prefer or leave unstitched.
2. Stitch bodice sides together until they meet at the middle.
3. For each set of two cut out circles, fold the space between them in half so that they lie on top of each other with right sides together. Stitch them together as you would a normal seam. Clip seams.
4. Complete stitching all circle sets. It is best to complete one set before beginning the next.

Finishing

Lining

The lining process is the same for both versions.

1. Leaving the shoulder seams open, stitch the right sides of the lining together at the sides.
2. Stitch right sides of the front necks of lining and bodice together. Do the same for back necks and arm holes. You may want to under stitch curves.
3. Join shoulders last -- bodice by machine, lining by hand.
4. Push lining down through the dress, beginning at the center front until both hems are at the bottom.
5. Pin the right sides of both hems together and stitch. You will only be able to stitch to a certain point and then will have to finish by hand.

Arranging

The dress can be worn with the puffs and corners pulled or pushed in the myriad of ways. Corners will become cowls when pushed in.